

MONTHLY MEMBERSHIP PROGRESS REPORT

LOCATION INDIA

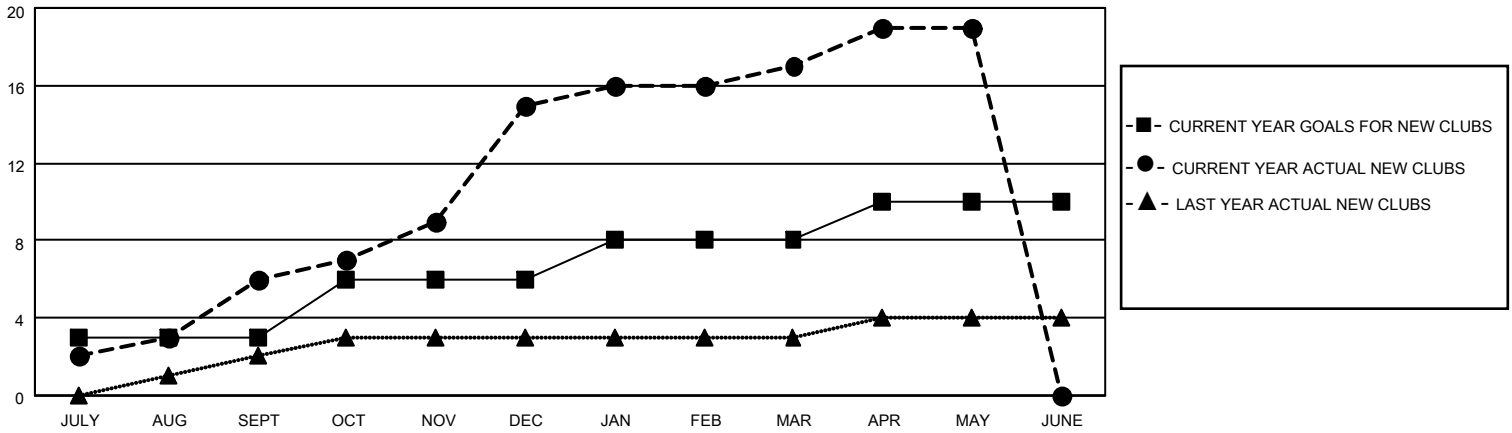
District 321 F

Results as of: 5/31/2021

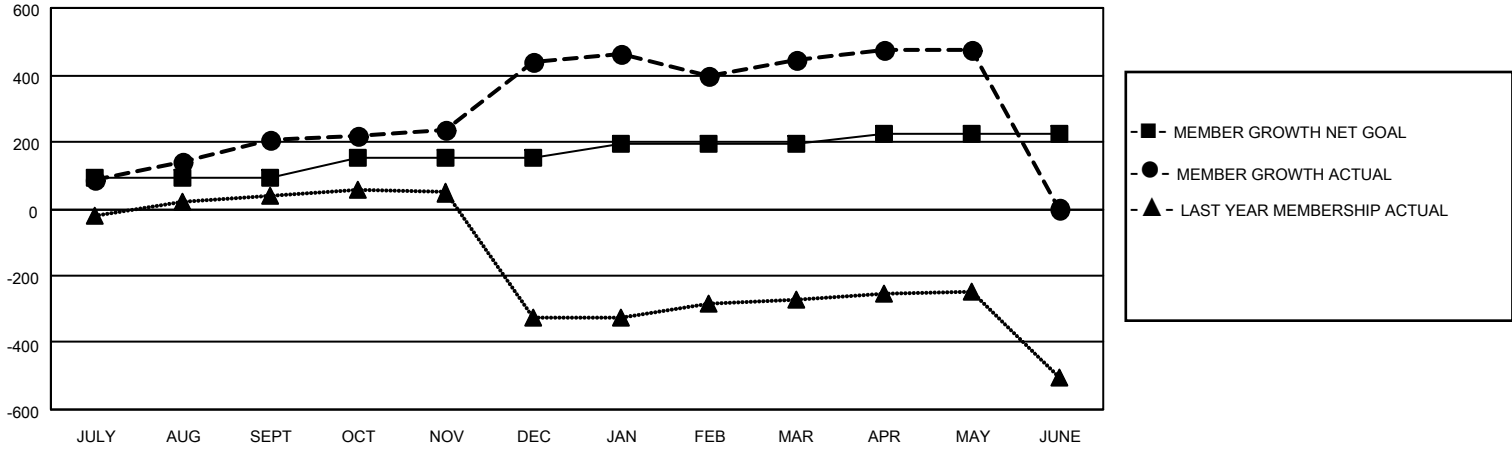
Clubs			
RESULTS FOR 2020-2021			
QUARTER	NEW CLUB GOAL	NEW CLUBS	DROPPED CLUBS
JULY/AUG/SEPT	3	6	0
OCT/NOV/DEC	3	9	0
JAN/FEB/MAR	2	2	9
APR/MAY/JUNE	2	2	0

Members			
RESULTS FOR 2020-2021			
QUARTER	MEMBER GROWTH NET GOAL	MEMBER GROWTH ACTUAL	DROPPED MEMBERS ACTUAL (including transfers)
JULY/AUG/SEPT	90	337	80
OCT/NOV/DEC	60	403	155
JAN/FEB/MAR	45	189	161
APR/MAY/JUNE	30	86	49

GOALS AND ACTUAL NEW CLUBS CUMULATIVE



GOALS AND ACTUAL MEMBERS CUMULATIVE



DROPPED CLUBS: 9	
<u>DROPPED MEMBERS</u>	
DECEASED	30
CLUB CANCELLED	95
OTHER	320
TOTAL	445

96 CLUBS OF 153 ADDED 1 OR MORE NEW MEMBERS

[CLICK HERE FOR CUMULATIVE MEMBERSHIP DATA](#)

<u>GENDER DISTRIBUTION</u>	
MALE	3,653 (87.02%)
FEMALE	545 (12.98%)

TOTAL FAMILY UNIT MEMBERS	1,330
FAMILY MEMBERS PAYING HALF DUES	858